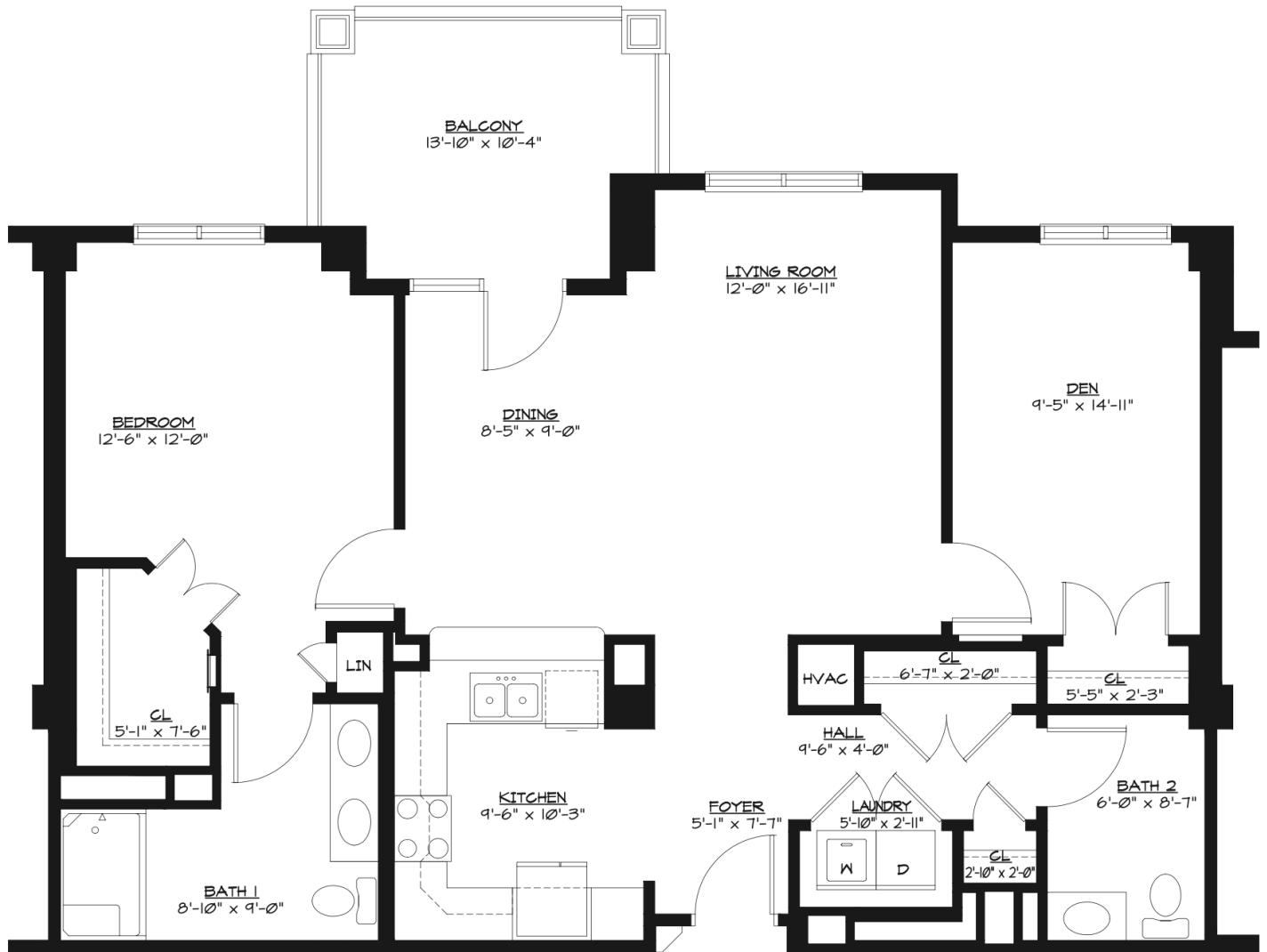


Azalea- The Lodge

One-Bedroom, 1,230 sq. ft.



Natural morning and evening light floods in through the Azalea's large windows, illuminating the open living and dining space, which opens to the kitchen through a breakfast bar. In addition to the large living room, the Azalea offers the benefit of a den – which you can turn into an office, entertainment center, or craft room. The living and dining area extends onto the balcony, a perfect size for a small outdoor dining table or furniture. The master suite features a large walk-in closet, linen closet, and full bath with double sinks.



7090 Covenant Woods Drive • Mechanicsville, VA 23111
CovenantWoods.com • Tel: 804.569.8006 • Fax: 804.569.8177

