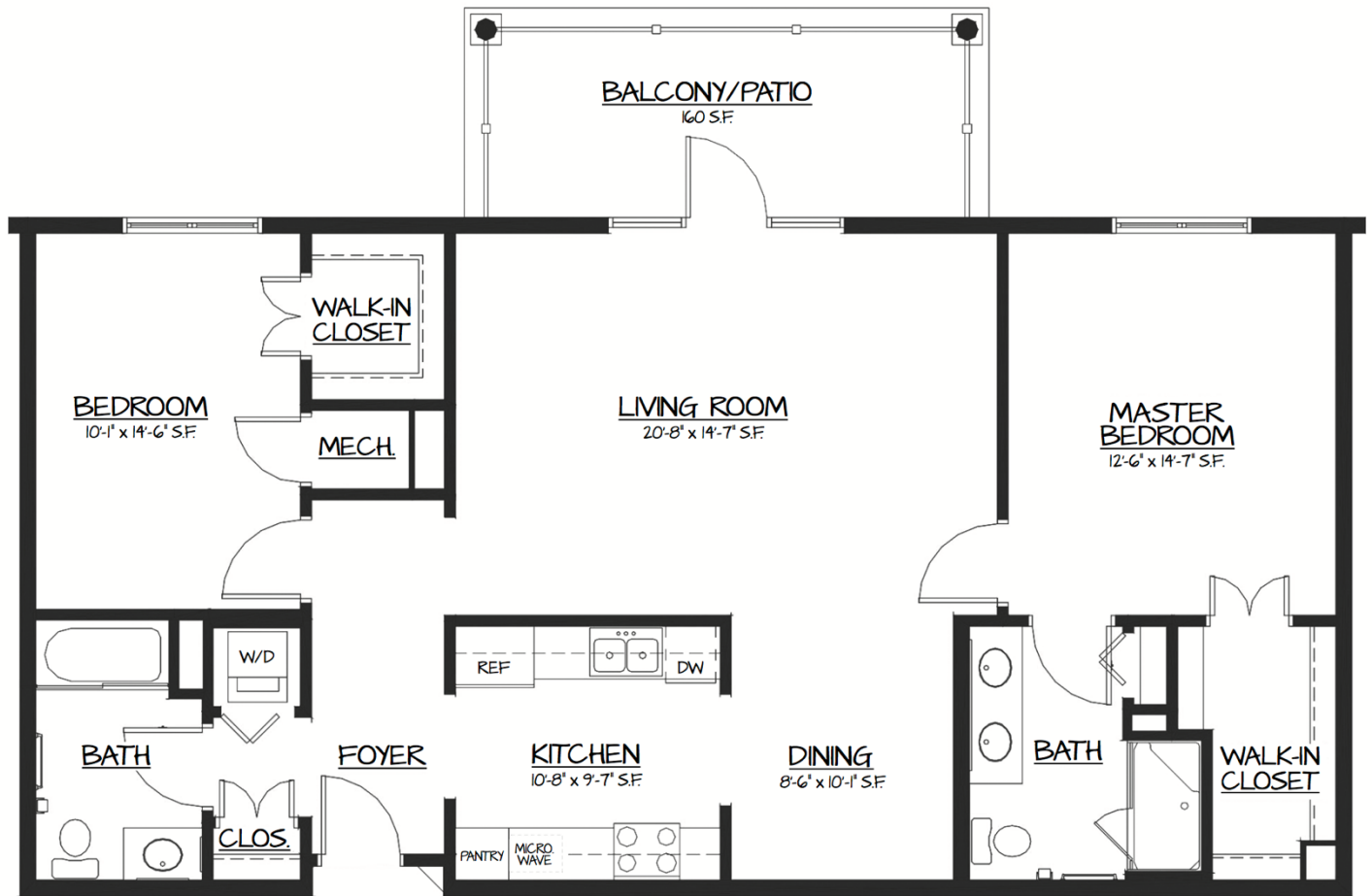


Camellia- The Manor

Two-Bedroom, 1,299 sq. ft.



Spacious and bright, the Camellia's large kitchen and living room with a separate dining space leaves residents with plenty of opportunity to decorate and make the place their own. Two bedrooms, both with walk-in closets, provide plenty of storage. The master also features an in-suite bath with double sinks and a linen closet. A large balcony (or patio, if located on the first floor) is perfect for entertaining or enjoying the beauty of Covenant Woods' natural setting.



7090 Covenant Woods Drive • Mechanicsville, VA 23111
CovenantWoods.com • Tel: 804.569.8006 • Fax: 804.569.8177

