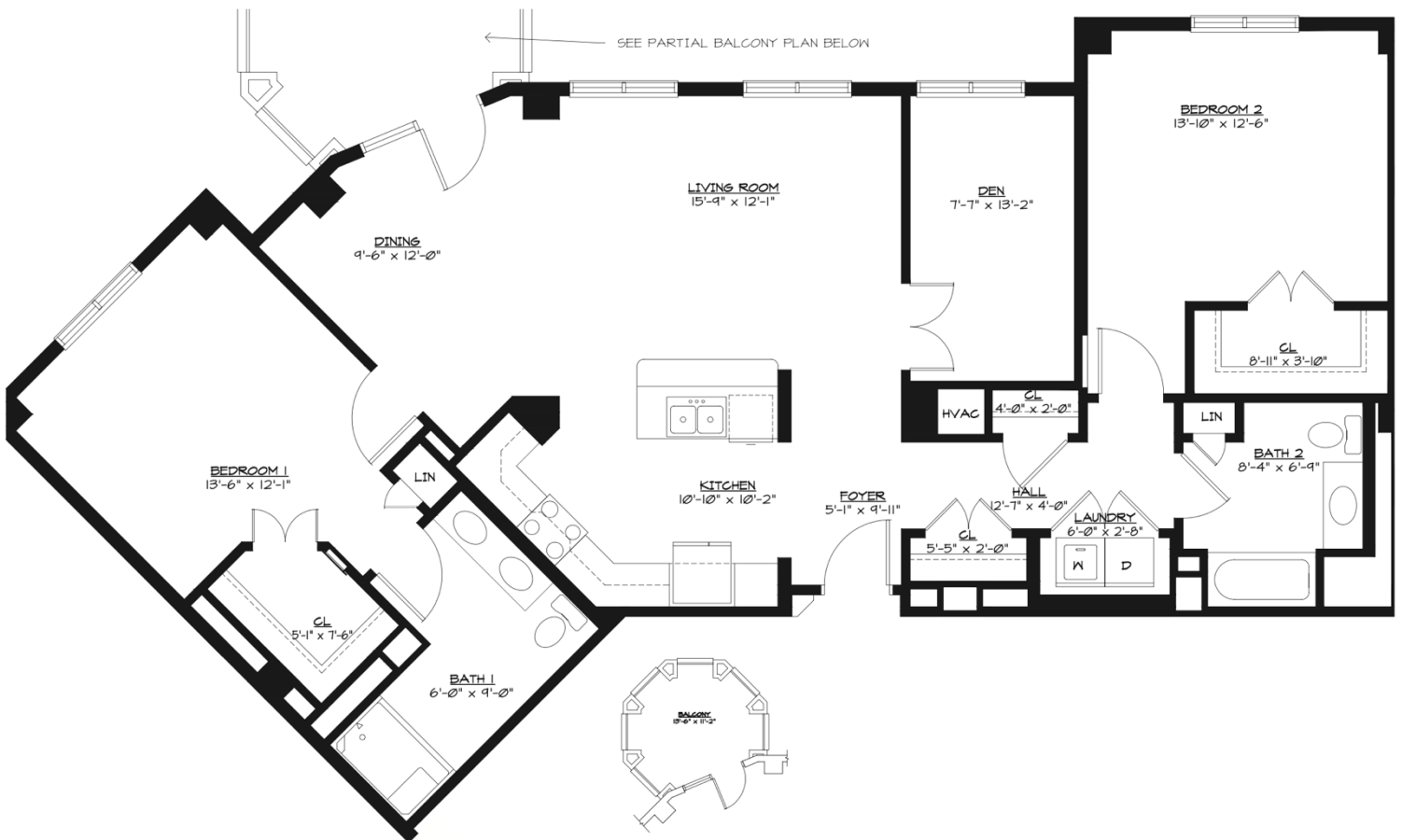


# Wisteria- The Lodge

## Two-Bedroom, 1,582 sq. ft.



Many of Covenant Woods' own marketing materials use the Wisteria's balcony in images due to its unique, turret-like circular design. Enjoy spacious outdoor living and spectacular views of the property on the balcony, which opens into one of the community's largest floor plans. The open living and dining room is connected to the kitchen only by a breakfast bar (or happy hour counter?). The Wisteria is also one of few homes that includes an added den – great for a home office, entertainment center, or craft room. A second bedroom is ideal for residents with regular visitors, children or guests – or even couples who prefer separate bedrooms. The master suite includes walk-in closet and one of Covenant Woods largest bathrooms, with double sinks.



7090 Covenant Woods Drive • Mechanicsville, VA 23111  
 CovenantWoods.com • Tel: 804.569.8006 • Fax: 804.569.8177

